

PPU-700II Thermal Printer Mechanism

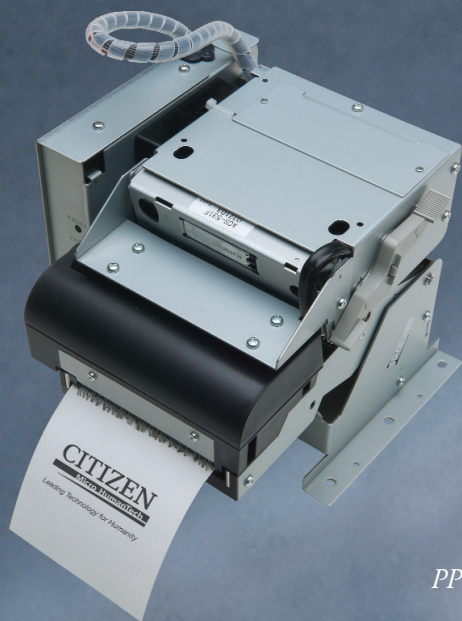
The Citizen PPU-700II thermal printer mechanism is the most modular, flexible kiosk mechanism for paper width, interfaces, firmware settings and mechanical orientation. Small, lightweight and fast, it includes a retractable presenter to prevent litter and minimize opportunities for vandalism. The PPU-700II uses large paper rolls and auto-paper loading to make changing rolls faster and easier.

Along with the ability to print barcodes, the PPU-700II also features flash memory. This enables you to store and print logos and user-defined characters to increase the visual impact of receipts.

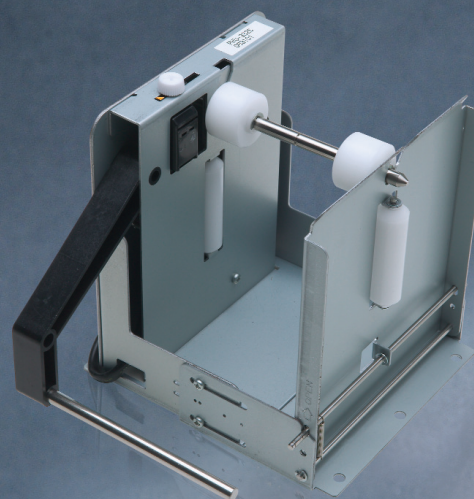
The Citizen PPU-700II mechanism works in a wide variety of kiosk applications to provide fast, reliable printing with the easiest maintenance possible.

CITIZEN
Micro HumanTech

Leading Technology for Humanity



PPU-700II



PHU-3320

PPU-700II Thermal Printer Mechanism

Features

- 83/80/67/58 mm selectable paper widths
- 150mm/sec High-speed thermal printing
- Two-color printing
- Interchangeable interface cards
- Presenter
- Upgradable firmware (EEPROM)
- Drop-in paper loading
- Alert Buzzer
- Retractor feature
- Built-in input buffer
- Barcode printing
- Flash Memory
- Large diameter paper rolls can be used
- Black Mark Sensor (option)
- Customization Utility
- Windows Drivers
- **Industry's Best - Three-Year Warranty**

Applications

- Hospitality
- Retail
- Ticketing
- Kitchen Receipt
- Coupons

Specifications

Printing Method	Thermal dot line printing, two color, drop-in loading type	
Print Width	80mm/640 dots (paper width 83mm); 72mm/576 dots (paper width 80mm) 60mm/480 dots (paper width 67mm); 54mm/432 dots (paper width 58mm)	
Dot Density	8 dots/mm	
Print Speed	150mm/sec (1200 dot lines/sec)	
Number of Columns	Font A: Max 53 columns 12 x 24 Font B: Max 71 columns 9 x 17 Font C: Max 80 columns 8 x 16	
Character Size	Font A: 1.25 x 3.00mm; Font B: 1.13 x 2.13mm; Font C: 1.00 x 2.00mm	
Logo registration/print	Capable of registering user-defined characters and logos into flash memory	
Barcode Types	UPC-A/E, JAN/EAN-8, JAN-EAN-13, ITF, Code 39, Code 93, Code 128, and CODABAR	
Line Spacing	4.23mm (1/6 inch), can be set by command (min.: 1/203 inch)	
Paper Roll	Thermal paper roll: Paper widths 83/80/67/58mm External diameter: ø203mm (when using PPU); Paper thickness: 65 to 150µm Core diameter: 25.4mm (Paper thickness: 80 to 150µm) Choice of direct paper eject Presenter and Retractor	
Interface	Centronics Parallel (IEEE 1284 compliant, Bi-directional communication), RS-232C Serial and USB	
Input Buffer	4k bytes (72 bytes dip switch selectable)	
Sensors	Paper near end sensor (adjustable for PHU series) (photo interruptor); Paper end sensor (mechanical switch) Black mark sensor (optional) Cover open sensor (mechanical switch); Paper out sensor (photo interruptor)	
Supply Voltage	DC 24V±7%	
Power Consumption	Approx. 100W max.	
AC Adapter Specifications	Rated input: AC 120 to 240V, 50/60 Hz, 120VA Rated output: DC 24V, 1.9A (Peak 3.5A)	
Weight	PPU: 1.6 kg (including control board); PHU: 0.9 kg (excluding paper roll)	
Outside Dimensions	145 (w) x 160 (d) x 172mm (h)	
Environment	Operation	Temperature 5-40°C
	Humidity	35-85%RH
	Storage	Temperature -20-60°C
	Humidity	10-90%RH
Reliability	Print Head Life	100 Km, 100 million pulses
	Auto Cutter Life	1 million + cuts
Safety Standards	UL, C-UL, FCC Class A	

CITIZEN

Micro HumanTech

363 Van Ness Way, Suite 404 • Torrance, CA 90501 • (310) 781-1460 • Fax: (310) 781-9152 • (800) 421-6516

www.citizen-systems.com

Legacy Technology Services

We Rent & Sell All Types Of Barcode Equipment

Call now to talk to an expert

866-271-9891

www.LegacyGlobal.com

Some brands we carry



MOTOROLA

Intermec

DATALOGIC™

Honeywell

EQUINOX
PAYMENTS



About us

- Legacy Technology Services is a leading nationwide provider of mobile computing, barcode, printers and point of sale equipment and services.
- For over a decade, thousands of clients across North America have trusted us to provide equipment from leading manufacturers backed by the services to support them.

Latest Hardware from top manufacturers

- Legacy handles virtually every major manufacturer of mobile computing, barcoding and point of sale equipment.

Expert Repair and Maintenance services

- Legacy is one of the best repair facilities in North America

Discontinued product sourcing

- They don't make it anymore? Our inventory also includes manufacturer close-outs and discontinued equipment to support our clients legacy infrastructure.

Trade-in and Disposal services

- That old equipment laying around your facility may still have some value. Legacy routinely purchases equipment from our clients around the globe.
 - Data destruction
 - Hardware disposal
 - Auditing services

Dedicated client account team

- Dedicated, highly trained account managers are here to answer all your questions and provide top notch service.

Equipment rental services

- Sometimes renting is a better solution, Legacy's huge rental inventory provides the equipment you need for temporary needs and projects.



Legacy, Inc.

160 West Road,
Ellington, CT 06029

Toll Free: 866-271-9891

Fax: 888-522-4684